



IPv6 Services over xDSL Networks - GSN Case Study

Speaker name
email address



Copy ... Rights

- This slide set is the ownership of the 6DEPLOY project via its partners
- The Powerpoint version of this material may be reused and modified only with written authorization
- Using part of this material must mention 6DEPLOY courtesy
- PDF files are available from www.6deploy.org
- Looking for a contact ?
 - Mail to : martin.potts@martel-consulting.ch

Presentation Outline

- The Greek Schools Network
- Why to move to IPv6?
- Deployment Strategies
- Address Delegation
- Cooperation
- Experiences



GSN Organization Profile

- The Greek School Network (GSN) is the educational intranet of the Ministry for National Education and Religious Affairs of Greece
- Objectives:
 - Provision of IP connectivity and IT services to the vast majority of primary/secondary schools in Greece
 - Facilitate the integration of new technologies in the educational process

Network Architecture

Backbone:

8 major PoPs, interconnected via GRNET

Distribution Network:

51 nodes

(8 main, 43 secondary)

Access Network technology:

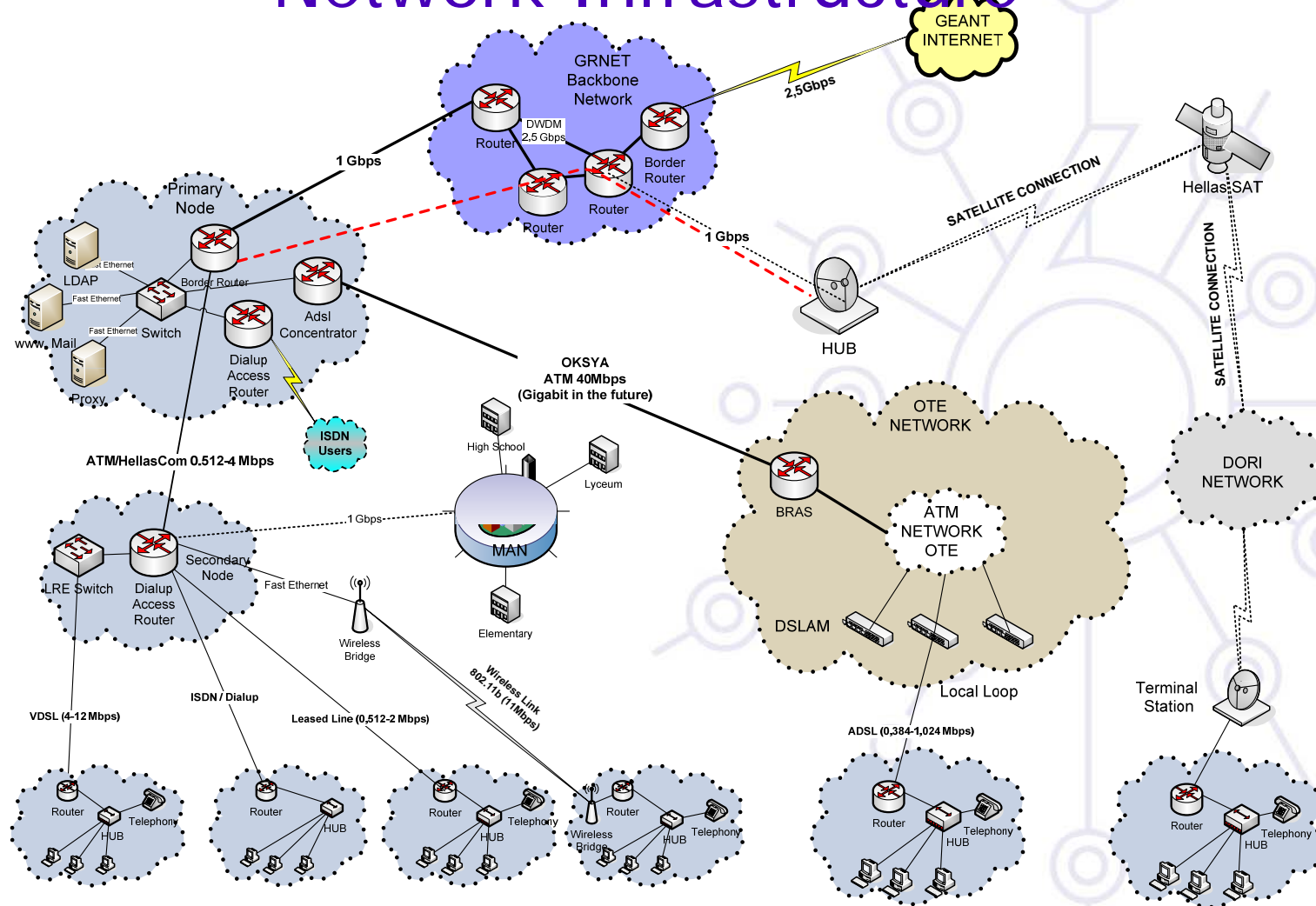
- Dialup (ISDN, PSTN)
- ADSL
- Leased Lines (SDSL, VDSL),
- Wireless

Number of connected schools:

- 14.200 primary & secondary schools (~100%)
- 2.862 administration offices



Network Infrastructure



GSN Services

- **Basic Services**

- Broadband / dial-up access
- E-mail, Mailing lists
- Forums, instant messaging, blogs
- Portal (www.sch.gr)
- Web-Hosting / Creation
- Web-Filtering, Proxy/Cache
- E-cards, E-News
- Security - CERT

- **Advanced Services**

- E-learning
- Real time services, VoD
- Secure Content Delivery
- Teleconference, Voice over IP

GSN Services (#2)

- **Infrastructure Services**

- Directory Service (LDAP)
- Public Key Infrastructure - AAI
- User registration service
- Statistics
- Helpdesk
- QoS Monitoring
- DNS
- GIS, Remote control



Why to move to IPv6?

- IPv6 removes the limitations imposed by the IPv4 address shortage
 - Every school has a NAT / PAT gateway due to address shortage
 - Difficult to debug interconnection problems
 - IPv6 provides enough address space for every school and pupil!
- P2P applications do not work with servers behind NAT/PAT
 - Multimedia e-learning and peer-to-peer virtual collaboration applications
 - Development of P2P applications becomes easier

Why to move to IPv6?

- Management and security issues
 - Deployment procedures in large numbers (auto-configuration of CPE routers and PCs)
 - Address fragmentation resolved – Simplify routing
 - Easier aggregation of classes of users
 - Security policies can be simplified using the IPv6 addressing schema which identifies various types or user groups and services

Why to move to IPv6?

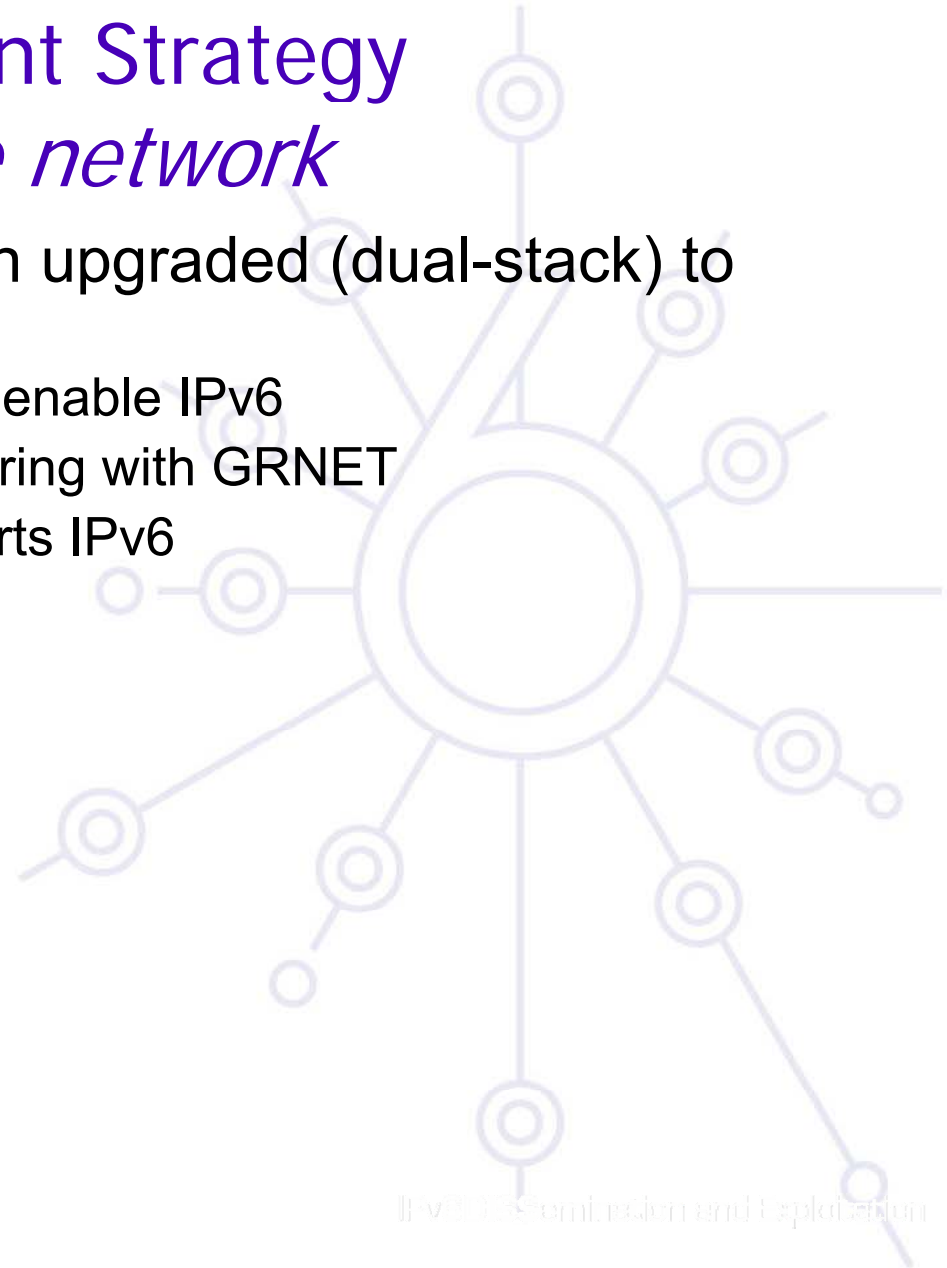
- Innovation – Expose to new technologies
 - Access to new technologies is now a reality for young students
 - Today's school pupils are the future citizens (or engineers)
 - National programs target today for school laptops per child - Complementary programs to OLPC initiatives
 - IPv6 allows the development of new advanced services that exploit features unique to IPv6 environments, such as enhanced security, multicast or mobility
 - Multiply the impact of other IPv6-enabled networks in Greece

Deployment Phases

- Phase 1 (2004-2005) Design studies & Preparation
 - Acquire address space, lab trials, upgrade core network, upgrade basic operational services , network monitoring
- Phase 2 (2006-2007) Pilot - Limited size network
 - Limited size trials, acquire operational experience, define specifications for long term hardware and software upgrades
- Phase 3 (2007-2008) – IPv6 & Broadband access
 - Large deployment of IPv6 access routers and servers, studies related to PC-labs (management, security, etc)
- Phase 4 (2009 -) - Applications
 - Large scale PC-lab upgrades, development of new services

Deployment Strategy for *Core network*

- All major PoPs have been upgraded (dual-stack) to IPv6
 - First part of the network to enable IPv6
 - Established IPv6 BGP peering with GRNET
 - Internal routing fully supports IPv6



Deployment Strategy for *Core network*

- Secondary distribution nodes still do not support IPv6
 - Distribution nodes today aggregate dialup connections from (obsolete) ISDN access routers – Limitations in memory and CPU capabilities
 - GSN decided to shift interconnection model from dial-up/ISDN to broadband (xDSL, wireless, etc).
 - New (broadband) access model resulted to revise network upgrade path and hardware specifications for new equipment
 - Plans to connect schools via (metro) Ethernet services to new distribution nodes. Public metropolitan area networks (MANs) are currently deployed.

Deployment Strategy for *Access Network*

- Started with on site trials at 50 schools
 - Create multiple CPE configuration files based on different interconnection models
 - Validate IPv6 address assignment scheme
 - Easy IPv6 address management and dynamic assignment for every school CPE (using DHCP prefix delegation)
- Moving to ~500 schools
 - Deploy IPv6 up to the access router in each school
 - PC labs still lacking IPv6-enabled OS due to administrative (¬ technical) reasons
- Enable IPv6 to ~3000 schools in a large deployment program
 - All schools will be connected via broadband access uplinks
 - Deployment still in progress – Complete in 2008

Deployment Strategy for *Infrastructure Servers*

- Upgrade all servers to become dual-stack
- Second upgrade services to support IPv6
 - Email (SMTP, IMAP, POP3)
 - Web hosting
 - GSN Web portal (www.sch.gr)
 - Web proxy / web filtering – The most difficult task!
 - AAA (Radius software and attributes)
 - Instant Messaging
 - Directory service (LDAP)
- Upgrade DNS service and update DNS entries
- New datacenters are equipped with IPv6-capable (aka OS and software) server farms

Deployment Strategy for *School PC labs*

- The most demanding challenge today
 - Administrative difficulties due to the large number (aka thousands) of PCs deployed in ~15K end sites
 - Management model of PC labs has changed the last years. Today, the administration of the labs is delegated to each school – Lack of central control / coordination
 - PC labs are based on (obsolete) operating systems, such as M\$ W2K
 - Large costs for IPv6 upgrades combined with software upgrades and hardware lifecycles
- Pilot tests to remotely enable IPv6 inside school labs (PCs and servers)
 - A limited number of schools already have commercial remote management software
 - Also working on open source remote management tools
 - Work still in progress

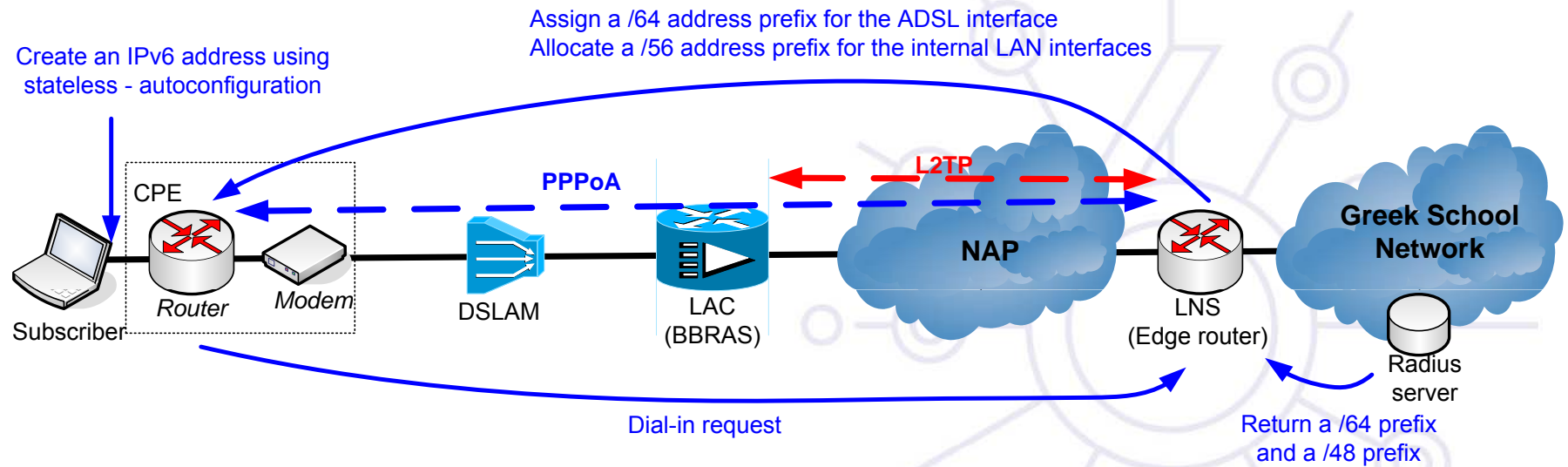
Address Delegation in School GW

- Delegating IPv4/6 addresses in GSN is a two-step process
 - Delegate an IPv6 prefix to the WAN interface and then assign an IPv6 prefix for the LAN interfaces.
 - Use another -different and independent- process for delegating IPv4 addresses.
- Scenario A – *Simple*
 - WAN interface gets an /128 IPv6 address via IPCPv6 or IPv6 loopback is statically configured.
 - LAN interface(s) is manually configured.
 - Statically set a static route at the LNS towards the CPE
 - Easy to deploy to IPv6-enabled routers but difficult to manage the access network! No means to provide extra configuration parameters to the local PCs, e.g. NTP servers.

Address Delegation in School GWs (#2)

- Scenario B – *Using DHCP-PD*
 - WAN interface gets an /64 prefix -instead of specific IPv6 address- by using IPCPv6. If there is a need for a static address assignment to the school router, the *Frame-Interface-ID** should also be provided.
 - Internal LAN interfaces are automatically configured using DHCP-PD (prefix delegation). This process takes place in IP layer, aka independent of the PPP session.
 - Automatically, a static route towards the CPE is set at the LNS.
 - This scenario allows full automated interface configuration while it is possible to provide extra configuration parameters to the local PCs.

Address Delegation in School GWs (#3)



Cooperation

- GSN has successfully cooperated the last years with other organizations, research projects, and companies to leverage results
 - Greek Research Network – GRNET (www.grnet.gr)
 - Long term knowledge transfer between NOCs
 - 6NET (www.6net.org)
 - Project participated to the design phases and first trials
 - Cisco Systems
 - Provide technical expertise and support at pilot phase
 - 6DISS (www.6diss.org)
 - Training of GSN engineers in 6DISS IPv6 workshops
 - 6DEPLOY (www.6deploy.org)



GSN Experiences

- IPv6 deployment in a large and complicated network is achievable with reasonable cost in terms of equipment and man power effort
- IPv6 technology is mature and can be deployed without the fear of network collapse
- Open source software allowed quicker upgrade of GSN services

GSN Experiences (#2)

- BUT, IPv6 transitions should start cautiously in order to:
 - Gain technical experience and become familiar with IPv6
 - Locate and diagnose possible problems
 - Decide beforehand to long term deployment strategies to avoid unnecessary costs
 - It is important IPv6 deployment to be planned with equipment upgrades

ΠΑΝΕΛΛΗΝΙΟ ΣΧΟΛΙΚΟ ΔΙΚΤΥΟ

το δίκτυο
στην υπηρεσία
της εκπαίδευσης

sch.gr



www.sch.gr